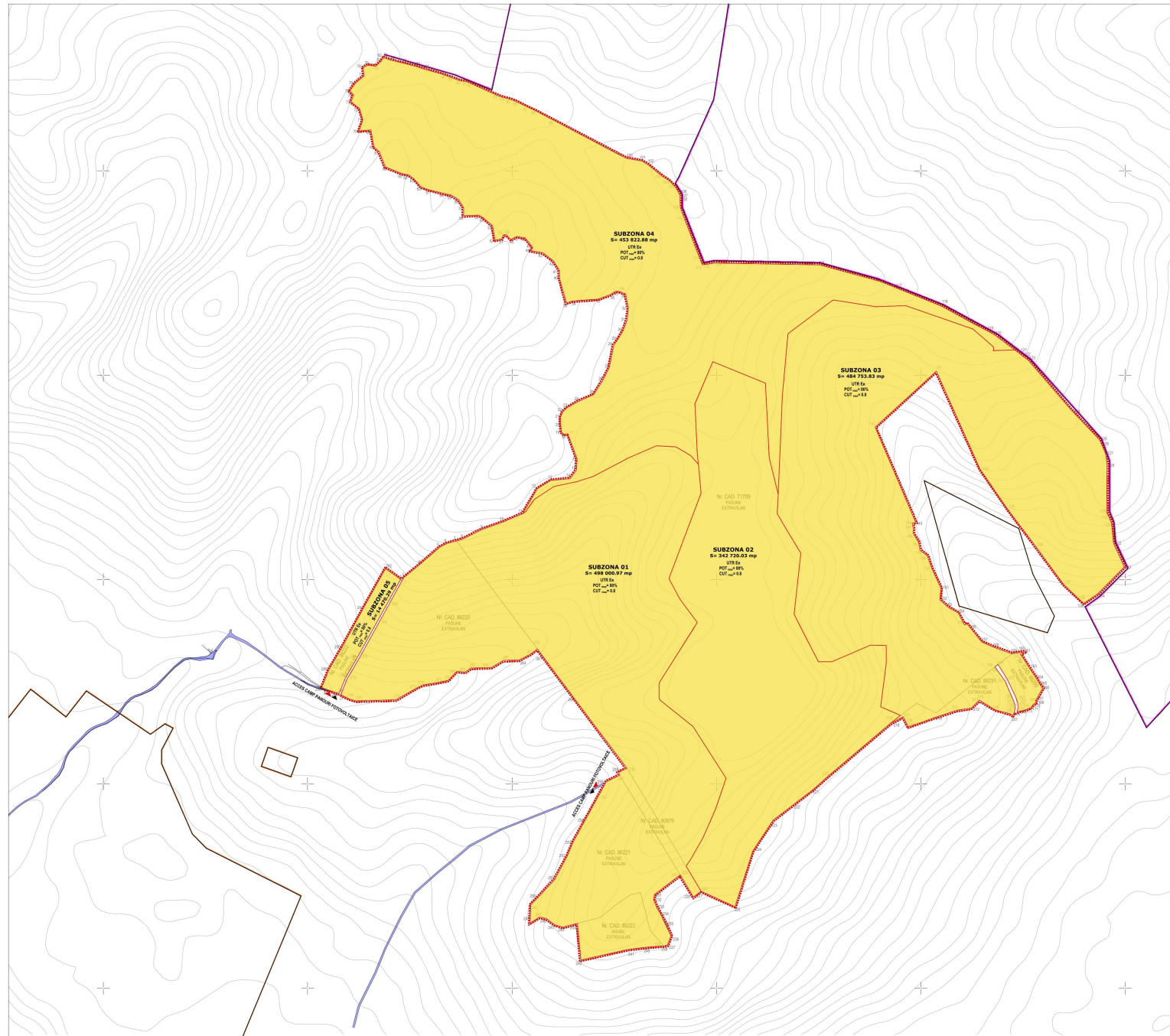


Inventar de coordonate zona studiata					
No. Pct.	X (m)	Y (m)	No. Pct.	X (m)	Y (m)
1	514000.824	391221.176	150	514007.756	39216.392
2	513998.228	391231.430	150	514006.514	39206.843
3	514000.808	391241.678	150	513999.377	39206.843
4	514040.342	391278.338	150	513959.019	39246.356
5	514070.000	391320.910	150	513832.101	39266.802
6	514068.415	391341.121	150	513818.200	39291.044
7	514068.600	391363.378	150	513809.952	39309.525
8	514068.800	391385.635	150	513800.528	39341.560
9	514127.496	391425.004	157	513847.192	39368.648
10	514162.870	391478.562	158	513856.922	39419.377
11	514161.400	391508.291	159	513818.721	39272.707
12	514202.360	391565.144	160	513822.862	39439.177
13	514242.430	391595.058	161	513821.790	39275.197
14	514241.070	391648.891	162	513786.480	39243.831
15	514268.330	391657.288	163	513782.244	39276.289
16	514268.390	391677.021	164	513782.244	39276.289
17	514356.760	391636.704	165	513742.470	39271.762
18	514356.380	391677.021	166	513782.244	39276.289
19	514360.500	391621.022	167	513704.019	39278.107
20	514360.560	391648.891	168	513697.458	39276.289
21	514371.600	391658.302	169	513697.458	39276.289
22	514411.291	391624.695	170	513694.070	39275.198
23	514428.884	391636.704	171	513696.888	39278.811
24	514435.720	391661.328	172	513679.364	39249.619
25	514452.278	391699.884	173	513679.364	39249.619
26	514460.040	391723.185	174	513675.653	39235.242
27	514515.850	391723.185	175	513675.653	39235.242
28	514573.830	391748.540	176	513683.281	39278.979
29	514585.210	391771.750	177	513697.458	39279.601
30	514609.164	391774.888	178	513690.523	39279.513
31	514608.160	391764.661	179	513694.013	39279.688
32	514605.830	391744.660	180	513696.428	39279.522
33	514608.160	391771.750	181	513698.913	39279.688
34	514704.761	391762.843	182	513700.500	39278.163
35	514745.660	391737.030	183	513703.013	39278.268
36	514697.137	391740.341	184	513705.604	39274.714
37	514686.398	391770.888	185	513708.017	39273.338
38	514681.380	391646.358	186	513710.644	39279.244
39	514678.737	391620.528	187	513755.978	39271.073
40	514747.164	391616.248	188	513791.001	39368.600
41	514748.708	391615.653	189	513785.960	39368.742
42	514779.708	391610.312	190	513784.683	39369.148
43	514780.280	391575.494	191	513752.245	39275.666
44	514808.210	391540.078	192	513737.600	39276.630
45	514812.340	391551.110	193	513704.922	39276.939
46	514835.928	391531.868	194	513702.433	39277.633
47	514839.683	391511.403	195	513699.428	39278.877
48	514832.198	391468.961	196	513698.811	39279.437
49	514844.018	391485.911	197	513693.432	39278.915
50	514841.338	391468.961	198	513689.448	39279.437
51	514853.978	391474.238	199	513686.768	39279.433
52	514853.180	391458.138	200	513681.639	39279.238
53	514865.500	391452.224	201	513680.540	39279.607
54	514868.380	391426.337	202	513677.572	39278.884
55	514861.860	391411.681	203	513676.254	39278.403
56	514868.117	391381.203	204	513674.602	39278.162
57	514911.028	391361.203	205	513672.580	39277.189
58	514920.000	391360.251	206	513669.073	39275.000
59	514945.740	391350.768	207	513667.362	39274.413
60	514945.050	391331.307	208	513670.982	39271.738
61	514958.111	391326.326	209	513661.385	39269.202
62	514960.437	391277.874	210	513704.547	39263.319
63	514960.958	391267.791	211	513701.527	39263.319
64	514990.398	391246.741	212	513685.390	39263.192
65	515014.441	391230.548	213	513680.653	39263.192
66	515009.668	391159.811	214	513681.897	39252.476
67	515018.218	391141.538	215	513683.653	39249.465
68	515008.218	391162.304	216	513647.883	39246.105
69	515100.398	391160.210	217	513644.289	39246.203
70	515080.075	391125.886	218	513649.792	39249.077
71	515125.091	391136.364	219	513650.262	39249.892
72	515115.182	391138.808	220	513620.607	39274.882
73	515106.205	391100.000	221	513685.202	39234.848
74	515106.961	391125.262	222	513665.344	39236.882
75	515104.742	391103.298	223	513610.768	39218.235
76	515121.820	391113.624	224	513535.558	39208.153
77	515292.497	391138.338	225	513599.732	39205.656
78	515292.460	391131.378	226	513297.420	39181.114
79	515268.681	391146.937	227	513235.420	39198.808
80	515265.628	391164.314	228	513229.227	39183.583
81	515285.184	391168.972	229	513277.058	39157.349
82	515281.621	391184.760	230	513281.614	39158.800
83	515297.376	391198.834	231	513229.000	39148.800
84	515291.398	391205.448	232	513216.318	39145.660
85	515284.303	391209.503	233	513198.000	39184.890
86	515286.121	391262.762	234	513177.000	39186.500
87	515286.872	391284.544	235	513168.000	39176.600
88	515297.881	391320.700	236	513128.299	39188.729
89	515292.880	391326.161	237	513105.603	39180.065
90	515290.378	391372.688	238	513103.972	391872.386
91	515278.496	391386.760	239	513105.128	391870.361
92	515276.878	391390.326	240	513101.416	391838.267
93	515276.130	391445.555	241	513084.000	391781.885
94	515187.137	391472.347	242	513088.903	391688.155
95	515174.867	391468.363	243	513108.000	391691.113
96	515170.338	391507.824	244	513149.388	391623.712
97	515168.404	391503.805	245	513155.645	391604.851
98	515146.482	391507.748	246	513170.458	391683.708
99	515152.870	391507.823	247	513173.880	391685.166
100	515090.792	391779.312	248	513159.847	391543.884
101	515028.388	391871.288	249	513128.474	391455.861
102	515015.448	391831.910	250	513019.128	391560.373
103	514986.698	391867.642	251	513026.361	391603.758
104	514970.513	391890.360	252	513027.790	391634.867
105	514960.537	391899.640	253	513036.971	391650.068
106	514944.540	391900.883	254	513049.200	391677.817
107	514940.820	391910.870	255	513066.048	391709.100
108	514931.701	391910.940	256	513068.844	391730.449
109	514910.233	391911.490	257	513027.527	391763.528
110	514880.960	391911.116	258	513027.665	391760.818
111	514781.606	391900.870	259	513037.901	391780.446
112	514780.871	391905.242	260	513030.680	391656.473
113	514771.900	391978.158	261	513038.126	391984.813
114	514747.644	391998.025	262	513035.111	391981.628
115	514746.168	392021.634	263	513018.847	391943.646
116	514763.178	392006.091	264	513035.611	391974.162
117	514748.181	392027.727	265	513031.915	391978.985
118	514868.598	392027.267	266	513074.870	391949.822
119	514907.993	392063.300	267	513078.411	391989.151
120	514988.200	392081.467	268	513073.317	391985.822
121	514961.496	392073.907	269	513078.211	391984.847
122	514846.843	392070.798	270	513053.616	391942.843
123	514846.878	392070.878	271	513047.420	391914.890
124	514415.330	392080.172	272	513041.812	391981.137
125	514424.377	392076.265	273	513044.654	391965.884
126	514333.206	392041.452	274	513035.485	391915.648
127	514320.921	392035.795	275	513033.144	391883.634
128	514263.791	392026.870	276	513028.572	391800.277
129	514240.932	392019.960	277	513027.586	391693.669
130	514156.888	392026.451	278	513018.440	391681.623
131	514131.912	392048.708	279	513027.586	391693.669
132	514088.478	392071.587	280	513009.752	391717.420
133	514031.188	392098.190	281	513008.192	391719.253
134	513964.528	392032.907	282	513046.636	391202.918
135	513941.244	392088.640	2	513066.528	391231.429
136	513941.684	392098.652	3	513090.811	391227.716
137	513988.062	392049.710	283	513067.864	391175.363
138	514071.898	392071.842	284	513012.178	391193.885
139	514373.533	392071.931	285	513058.486	391091.763
140	514270.933	392064.408	286	513027.887	391076.911
141	514310.100	392037.724	287	513029.746	391050.070
142	514327.266	392027.871	288	513029.271	391034.359
143	514340.140	392047.371	289	513078.137	391051.838
144	514373.860	392025.010	290	513084.128	391084.265
145	514373.633	392041.400	291	513069.109	391136.311
146	514311.111	392048.708	292	513026.345	391180.463
147	514302.385	392044.170			
148	514071.818	392048.708			



LEGENDA

- Limita teritoriala administrativa
- Limita intravilanului
- Zona propusa pentru reglementare - incinta campului pastoral fotovoltaic
- Limita proprietatii existente
- Limita de proprietate propusa
- Terenuri aflate in proprietate domeniu privat
- Acces pietonal
- Acces